

REVOLUTIONIZE THE NETWORK FOR MODERN HEALTHCARE



Digital transformation in healthcare is vital, and the transformation of the underlying infrastructure is also essential. Unfortunately, the complexity of traditional IT architectures prevent rapid adaptation, limit choice, and drive-up operational costs. The network is the lifeblood of modern healthcare. Foundationally, it must be reliable, secure, and interoperable. However, to truly accelerate digital health, it must deliver automation and insights. By leveraging AI and data science tools, the network can now deliver optimized experiences and simplified network operations for patients, guests, and staff.

HEALTHCARE OF TOMORROW

- Better end-user experiences
- Secure 24/7 connectivity for Internet of Medical Things (IoMT), healthcare applications, and systems
- Zero touch deployment and remote support for telemedicine and other applications
- Robust security to satisfy HIPAA compliance
- Real-time indoor location services to track medical assets, engage with patients, and improve overall safety

NETWORK INNOVATION OUTCOMES

Healthcare Providers

- Deliver reliable and consistent network connectivity for patients, guests, and staff
- Reduce wait times and missed appointments with turn-by-turn navigation
- Eliminate delays associated with locating wheelchairs, pumps, ventilators, and other critical assets
- Improve safety and hygiene by mapping foot traffic patterns and integrating door lock systems and hand sanitization stations

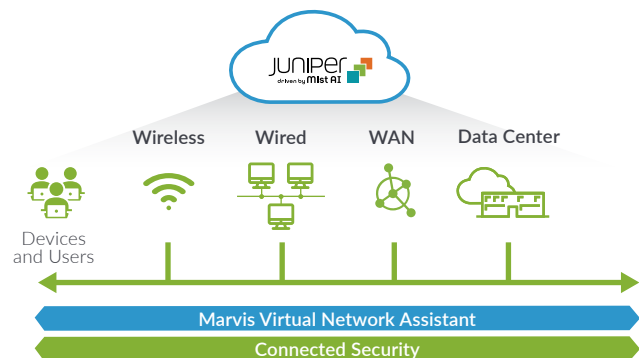
Life Sciences

- Support mission-critical R&D efforts with carrier-grade networks
- Improve manufacturing floor productivity, workflows, resource allocation, and asset visibility and utilization
- Increase product security, consumer safety, and quality control procedures
- Enhance collaboration and remote support

AI-DRIVEN HEALTHCARE SOLUTION

Juniper, driven by Mist AI™, delivers:

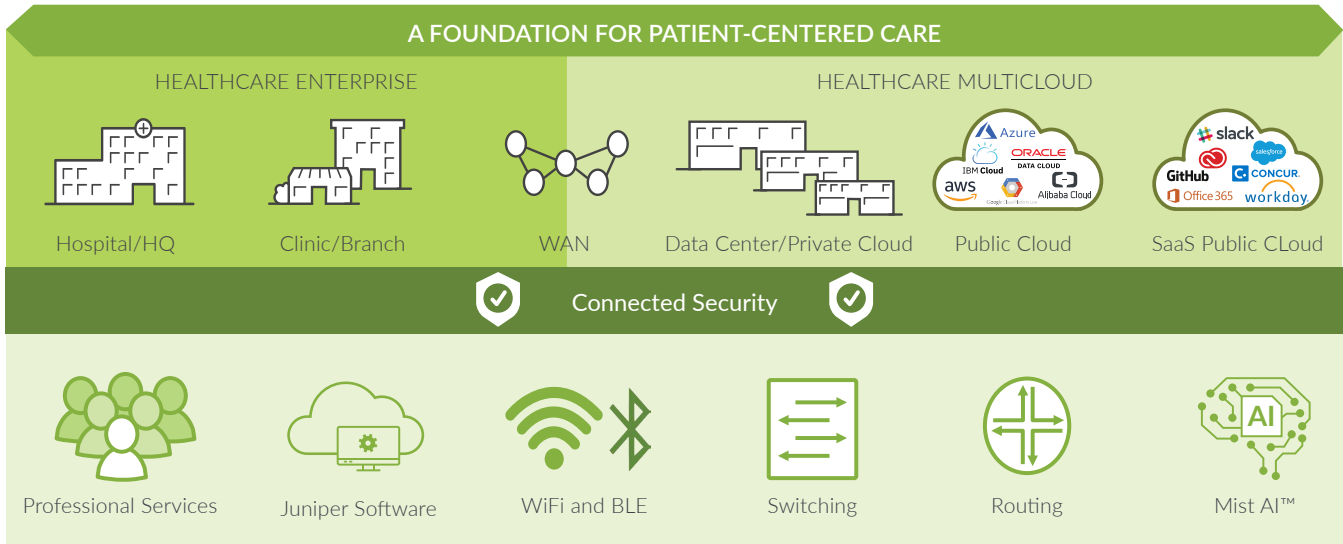
- Superior experiences across variety of domains
- Simplified networks using AI for IT operations (AIOps)
- A robust portfolio of cloud-ready switches, APs, and SD-WAN edge devices
- The Self-Driving Network™ with proactive troubleshooting issue resolution
- A microservices cloud natively integrated with AI and data science tools
- Strategic business value with location services without needing overlay software or physical beacons
- 100% open and programmable APIs for full automation and integration with third-party workflows



CUSTOMERS



Juniper, driven by Mist AI, is focused on simplifying network operations and optimizing user and device experiences for healthcare. The focus results in a network experience that is more predictable, reliable, and measurable along with added benefits of wayfinding, asset visibility, and contact tracing capabilities.



JUNIPER MIST™ CLOUD SERVICES QUICK VIEW

- WI-FI ASSURANCE:** Make Wi-Fi predictable, reliable, and measurable. Automate operations, save time and money, and get unprecedented visibility into the Wi-Fi user experience.
- WIRED ASSURANCE:** Deliver better experiences for connected devices with AI-powered automation and service level. Leverage rich Junos telemetry from EX Switches to enable simpler operations, shorter mean time to repair, and improved visibility.
- WAN ASSURANCE:** Bring AI-driven insights for the WAN and branch into your Juniper secure SD-WAN solution. Shift the focus from network and application behavior to actual user experiences.
- MARVIS VIRTUAL NETWORK ASSISTANT:** Mist AI comes to life with the industry’s first virtual network assistant. Marvis helps IT teams get to answers with streamlined operations and simplified troubleshooting—helping to boost user experiences.
- RISK PROFILING:** Risk Profiling driven by Mist AI empowers IT teams to defend infrastructure by providing deep network visibility and enabling policy enforcement at every point of connection throughout the network.
- PREMIUM ANALYTICS:** Get network visibility and business insights to drive your digital transformation journey. Really understand business operations while overcoming the complex challenges associated with the influx of big data from network and client endpoints.
- USER ENGAGEMENT:** Leverage patented Virtual BLE (vBLE) array technology and Mist AI to drive down deployment costs and improve the accuracy of indoor location services, from wayfinding to location-based proximity notifications.
- ASSET VISIBILITY:** Make it easy to find critical assets and resources, with detailed location analytics at your fingertips. Our vBLE technology leverages the same infrastructure for engaging with mobile users, reducing the need for overlay sensors or physical beacons.

INDUSTRY RECOGNITION OF JUNIPER

Gartner¹

- [Leader in Gartner 2020 Wired and Wireless LAN Access Infrastructure](#)
- [Leader in Gartner 2020 Magic Quadrant for Data Center and Cloud Networking](#)
- [Gartner Peer Insights 2020 Customers’ Choice for Wired and Wireless LAN Access Infrastructure²](#)
- [Visionary in Gartner 2020 Magic Quadrant for WAN Edge Infrastructure](#)
- [Challenger in Gartner 2020 Enterprise Network Firewalls](#)

Forrester³

- [Leader in The Forrester Wave: Open, Programmable Switches for a Businesswide SDN, Q3 2020](#)

¹ Gartner does not endorse any vendor, product or service depicted in its research publications, and does not advise technology users to select only those vendors with the highest ratings or other designation. Gartner research publications consist of the opinions of Gartner’s research organization and should not be construed as statements of fact. Gartner disclaims all warranties, expressed or implied, with respect to this research, including any warranties of merchantability or fitness for a particular purpose.

² Gartner Peer Insights Customers’ Choice constitute the subjective opinions of individual end-user reviews, ratings, and data applied against a documented methodology; they neither represent the views of, nor constitute an endorsement by, Gartner or its affiliates.

³ The Forrester [Industry] Wave™ is copyrighted by Forrester Research, Inc. Forrester and Forrester Wave™ are trademarks of Forrester Research, Inc. The Forrester [Industry] Wave™ is a graphical representation of Forrester’s call on a market. Forrester does not endorse any company, product, or service depicted in the Forrester [Industry] Wave™. Information is based on best available resources. Opinions reflect judgment at the time and are subject to change.